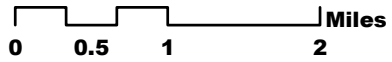








Figure 8

Depth to Bedrock
Township of Washington
Morris County, New Jersey



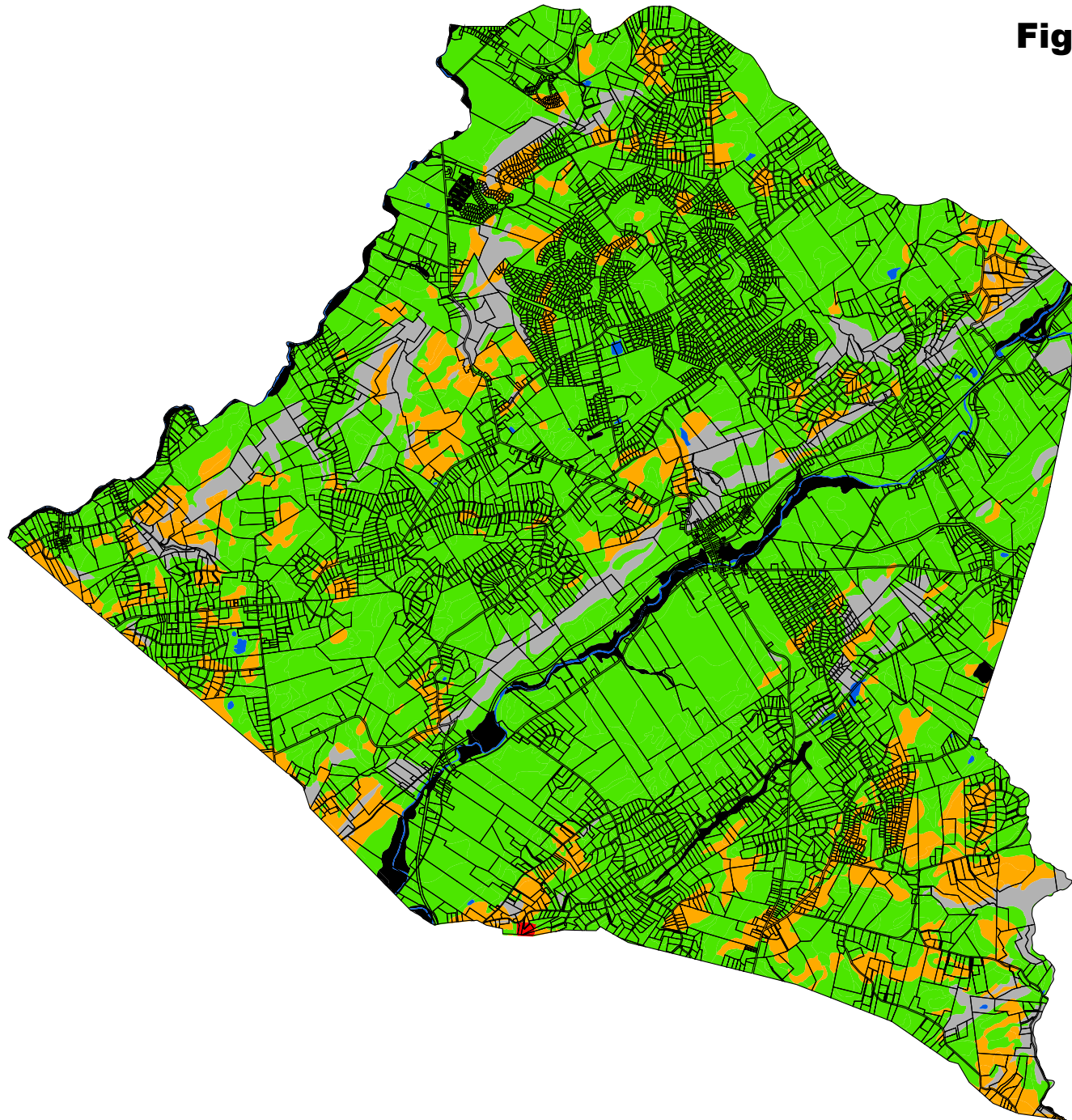
Legend

-  **Generally Shallow**
-  **Generally Deep**
-  **Variable**
-  **Too Variable to Estimate**
-  **Water**
-  **Unclassified**

Washington Township Master Plan
Adopted December 2003

Data Sources:
Morris County Planning and Development
NJDEP and USDA NRCS - May 1999

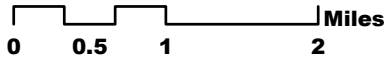
This map was developed using New Jersey Department of Environmental Protection Geographic Information System digital data, but this secondary product has not been NJDEP verified and is not State-authorized.



Highly Erodible Lands- Water

Township of Washington
Morris County, New Jersey

Figure 9



Legend

- Not Highly Erodible
- Potentially Highly Erodible
- Highly Erodible Lands
- Not Classified

Washington Township Master Plan
Adopted December 2003

Data Sources:
Morris County Planning and Development
NJDEP and USDA NRCS - May 1999

This map was developed using New Jersey Department of Environmental Protection Geographic Information System digital data, but this secondary product has not been NJDEP verified and is not State-authorized.

BANISCH
ASSOCIATES, INC.
Planning and Design

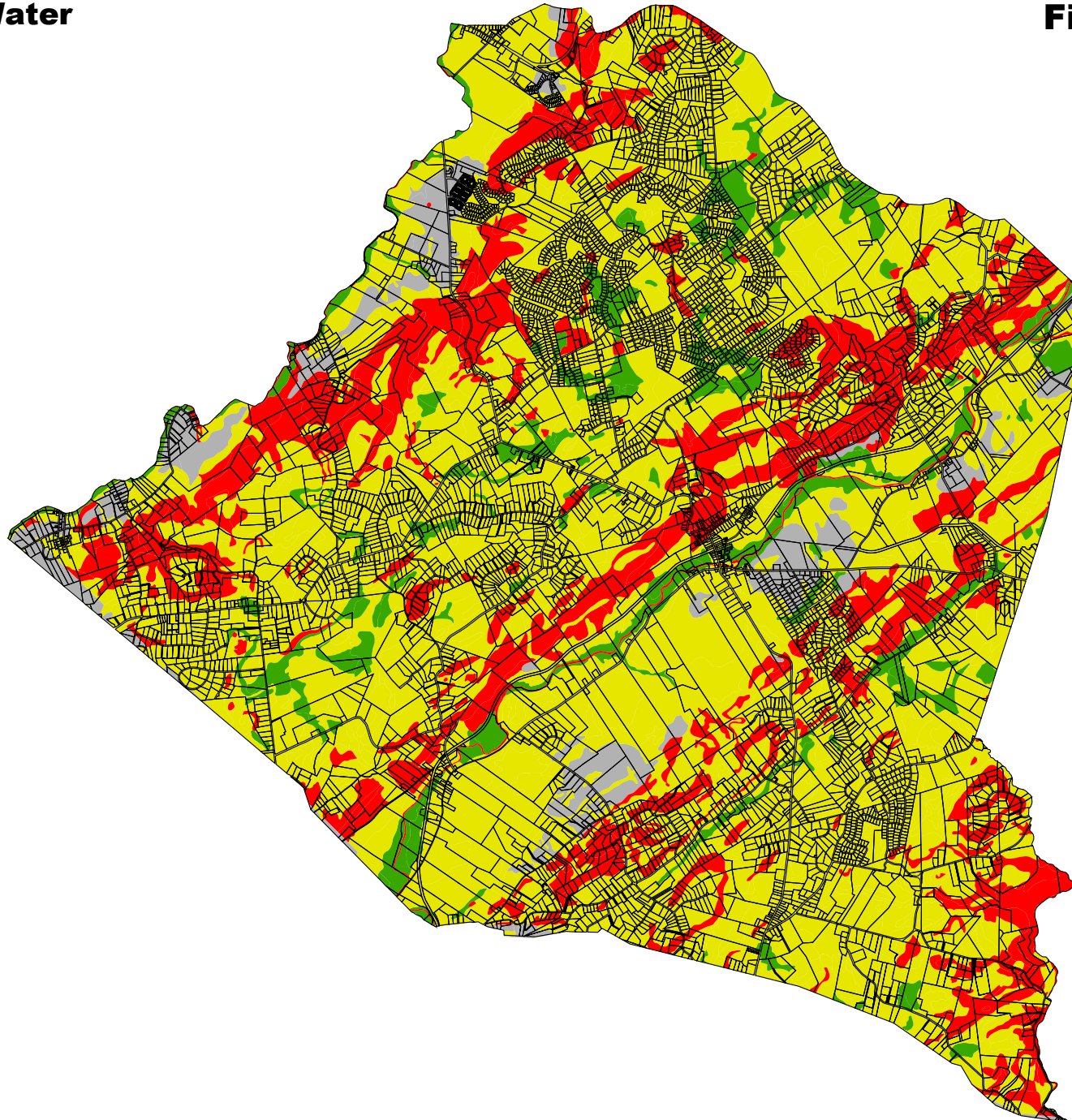
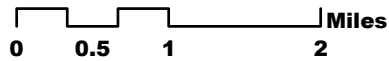


Figure 11

**Trout Maintenance/Trout Production
with Required Buffers**
Township of Washington
Morris County, New Jersey



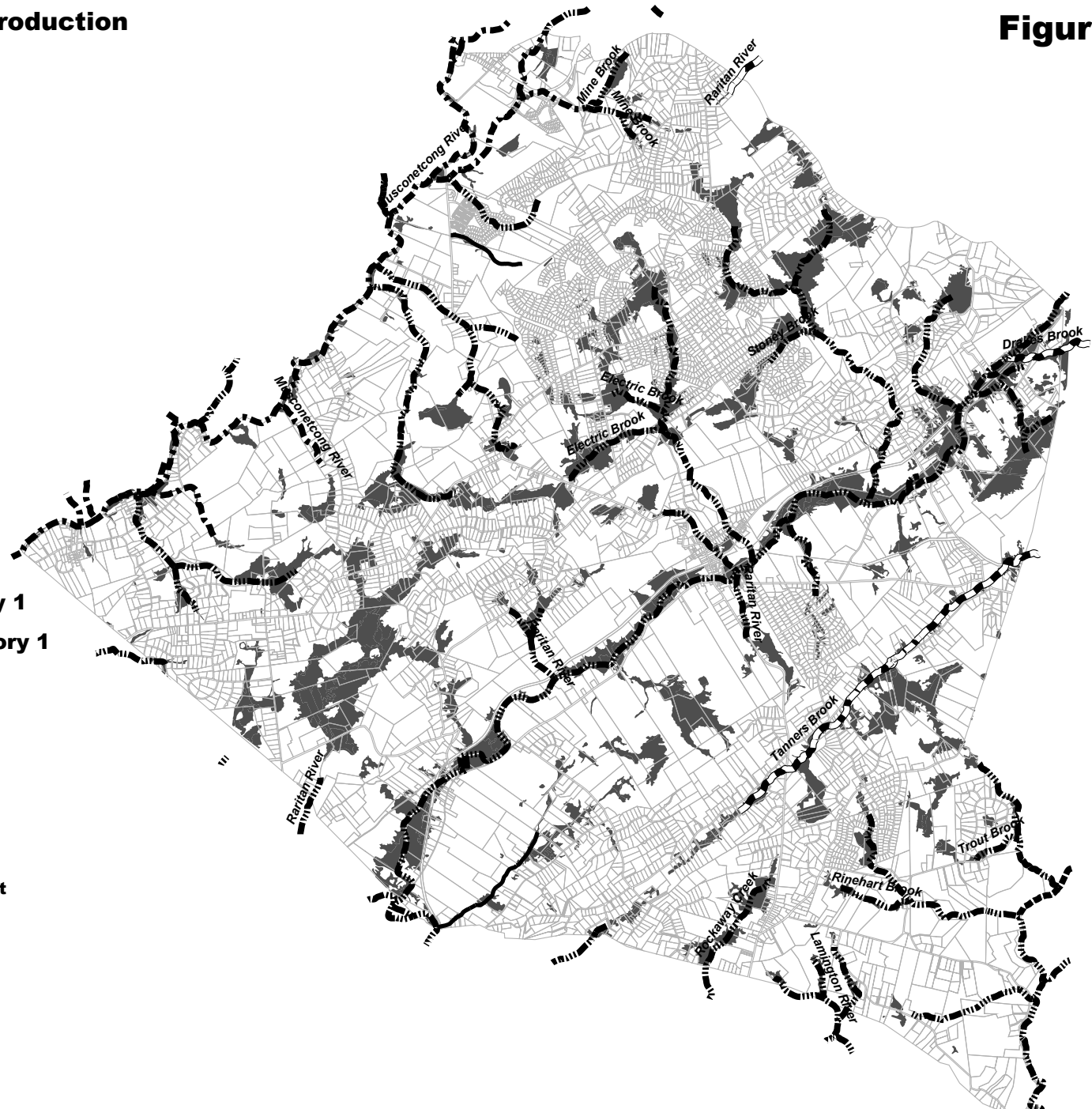
Legend

-  **Wetlands**
-  **Trout Production - Category 1**
-  **Trout Maintenance - Category 1**
-  **Non-Trout - Category 1**
-  **Trout Maintenance**
-  **Non-Trout**

Washington Township Master Plan
Adopted December 2003

Data Sources:
Morris County Planning and Development
NJDEP - July 2003

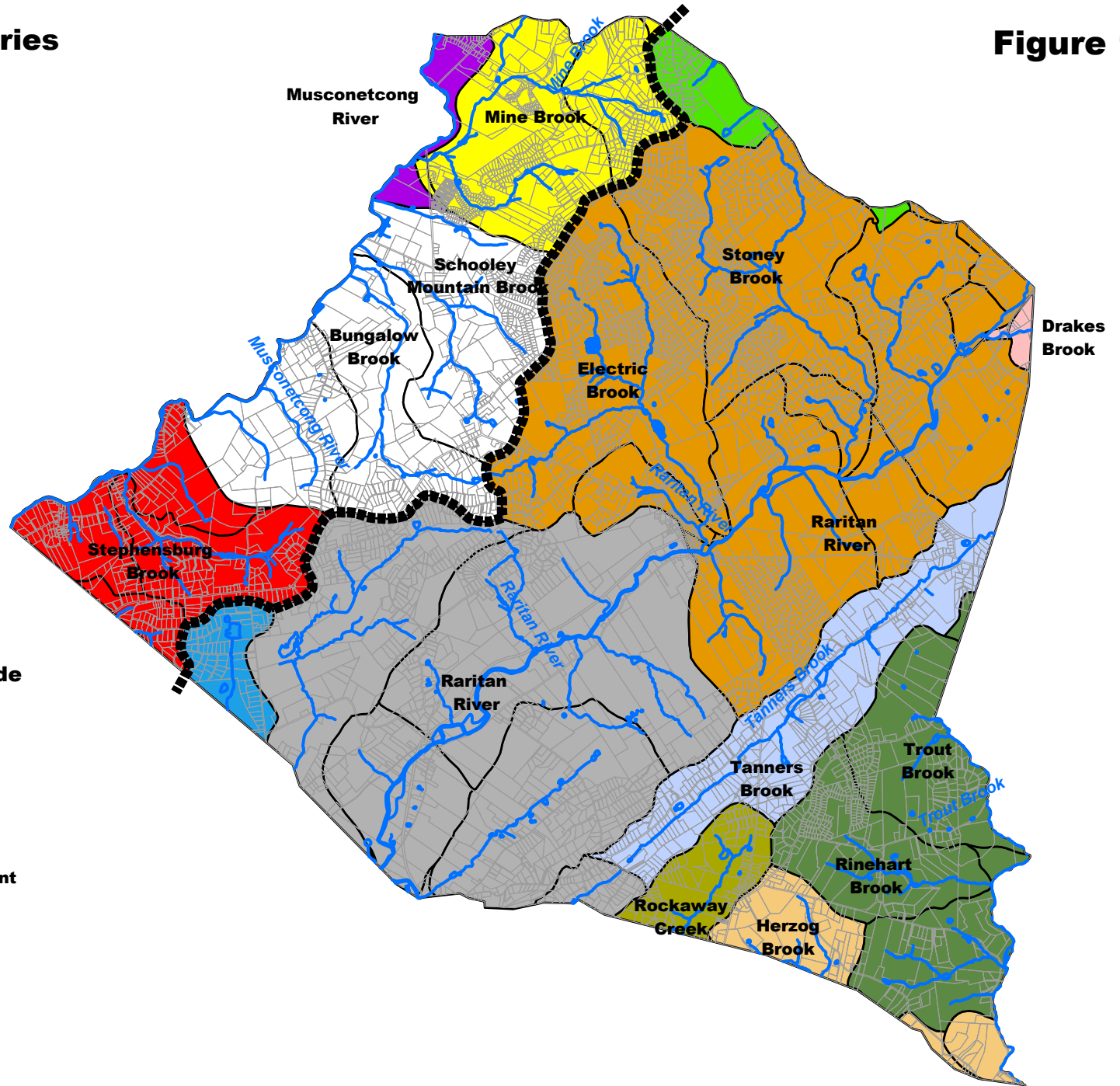
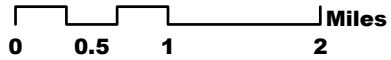
This map was developed using New Jersey Department of Environmental Protection Geographic Information System digital data, but this secondary product has not been NJDEP verified and is not State-authorized.



Subwatershed Boundaries

Township of Washington
Morris County, New Jersey

Figure 12



Legend

- Streams and Rivers
- Major Drainage Basin Divide

Washington Township Master Plan
Adopted December 2003

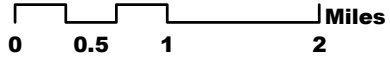
Data Sources:
Morris County Planning and Development
NJDEP - April 2000

This map was developed using New Jersey Department of Environmental Protection Geographic Information System digital data, but this secondary product has not been NJDEP verified and is not State-authorized.

Wetland Types

Township of Washington
Morris County, New Jersey

Figure 13



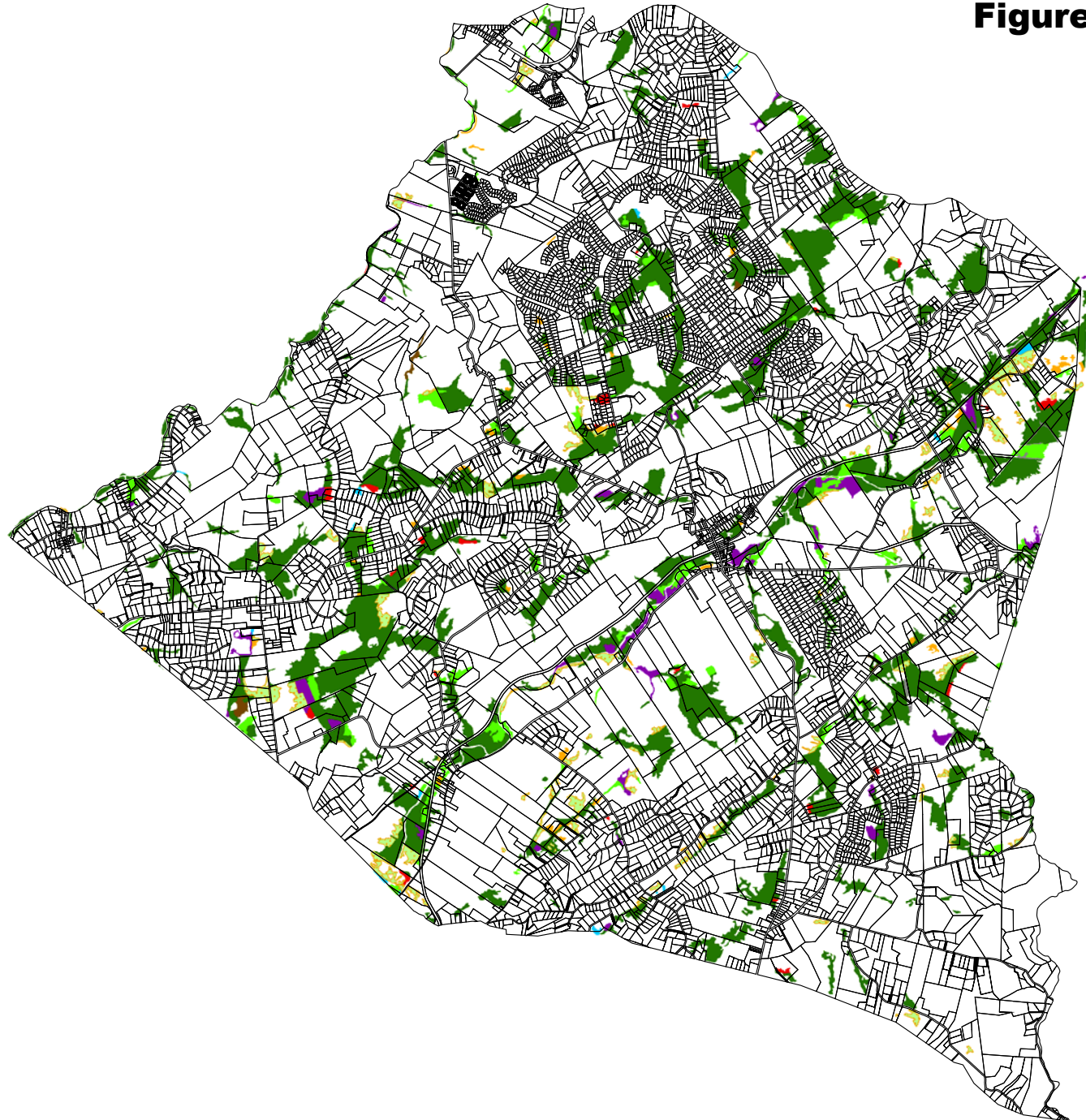
Legend

-  Agricultural Wetlands
-  Coniferous Wooded Wetlands
-  Deciduous Wooded Wetlands
-  Deciduous Shrubby Wetlands
-  Successional Wetlands
-  Herbaceous Wetlands
-  Disturbed Wetlands
-  Managed Wetlands
-  Wetland Right of Way

Washington Township Master Plan
Adopted December 2003

Data Sources:
Morris County Planning and Development
NJDEP - 1995 Land Use/Land Cover

This map was developed using New Jersey Department of Environmental Protection Geographic Information System digital data, but this secondary product has not been NJDEP verified and is not State-authorized.






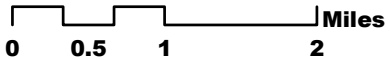
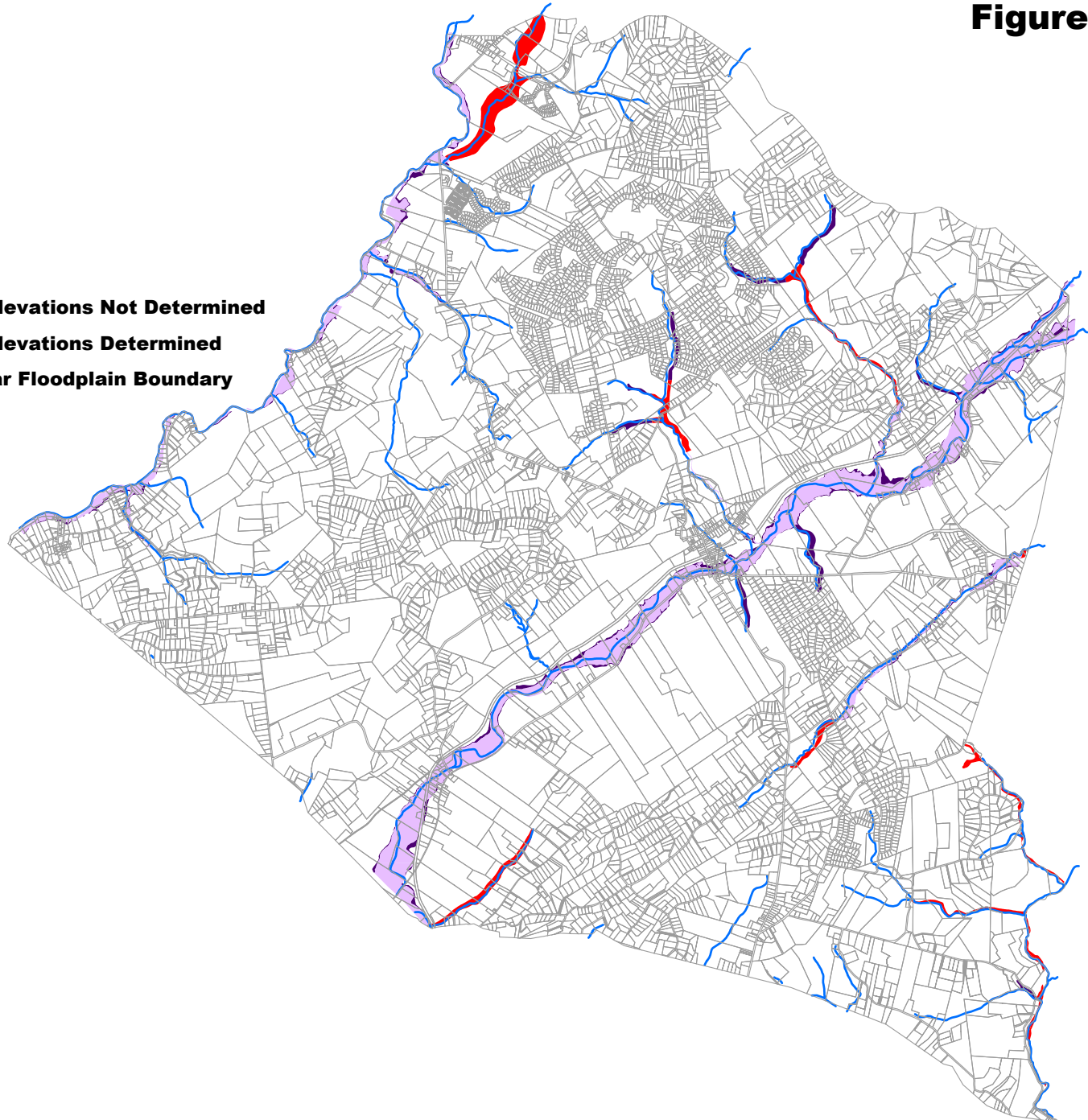
FEMA Floodzones

Township of Washington
Morris County, New Jersey

Figure 14

Legend

-  100 Year Floodplain - Base Flood Elevations Not Determined
-  100 Year Floodplain - Base Flood Elevations Determined
-  Area Between the 100 and 500 Year Floodplain Boundary



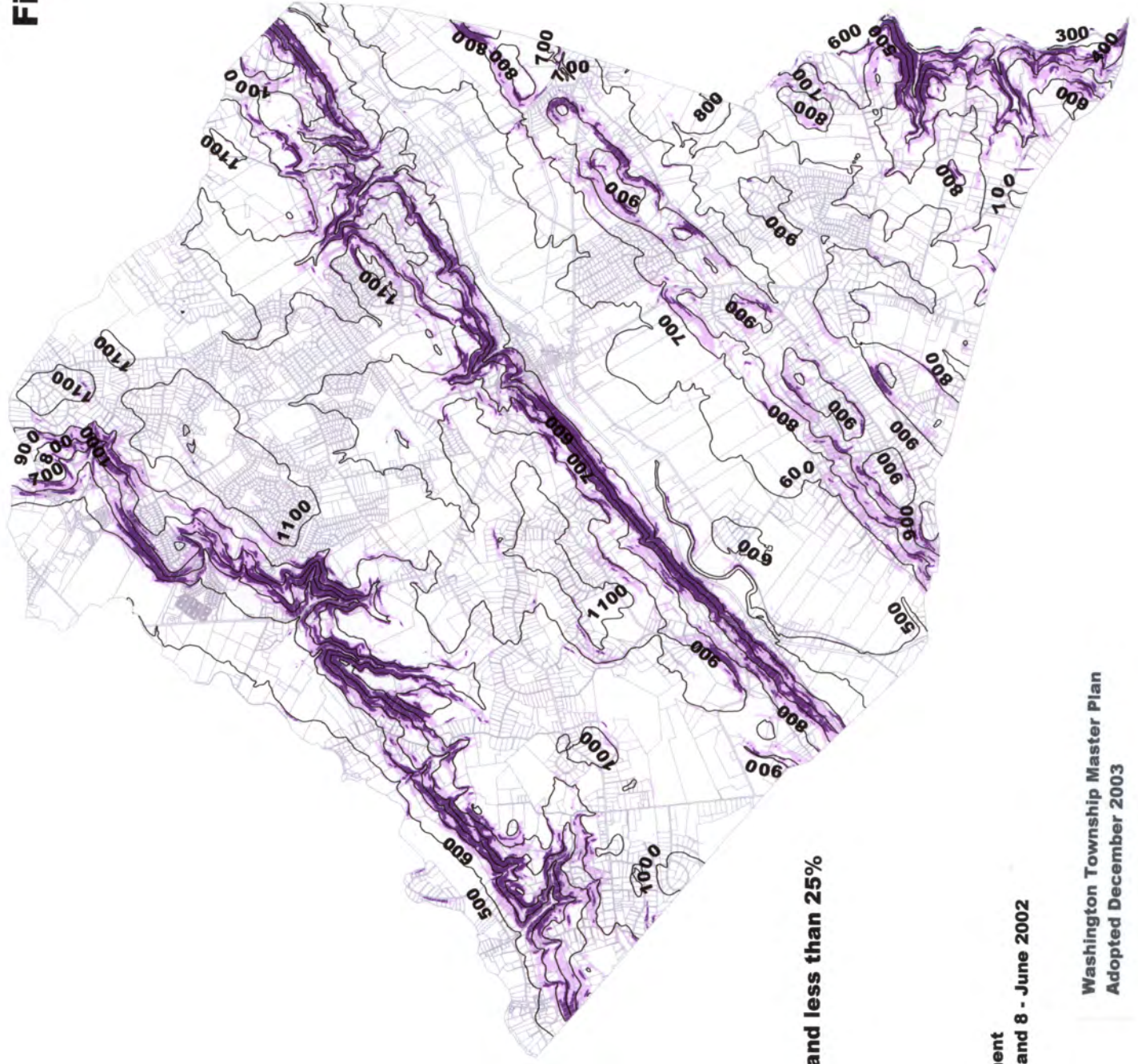
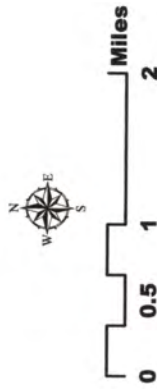
Washington Township Master Plan
Adopted December 2003

Data Sources:
Morris County Planning and Development
NJDEP - 1999
FEMA - 1996

This map was developed using New Jersey Department of Environmental Protection Geographic Information System digital data, but this secondary product has not been NJDEP verified and is not State-authorized.

Figure 15

Steep Slopes
 Township of Washington
 Morris County, New Jersey



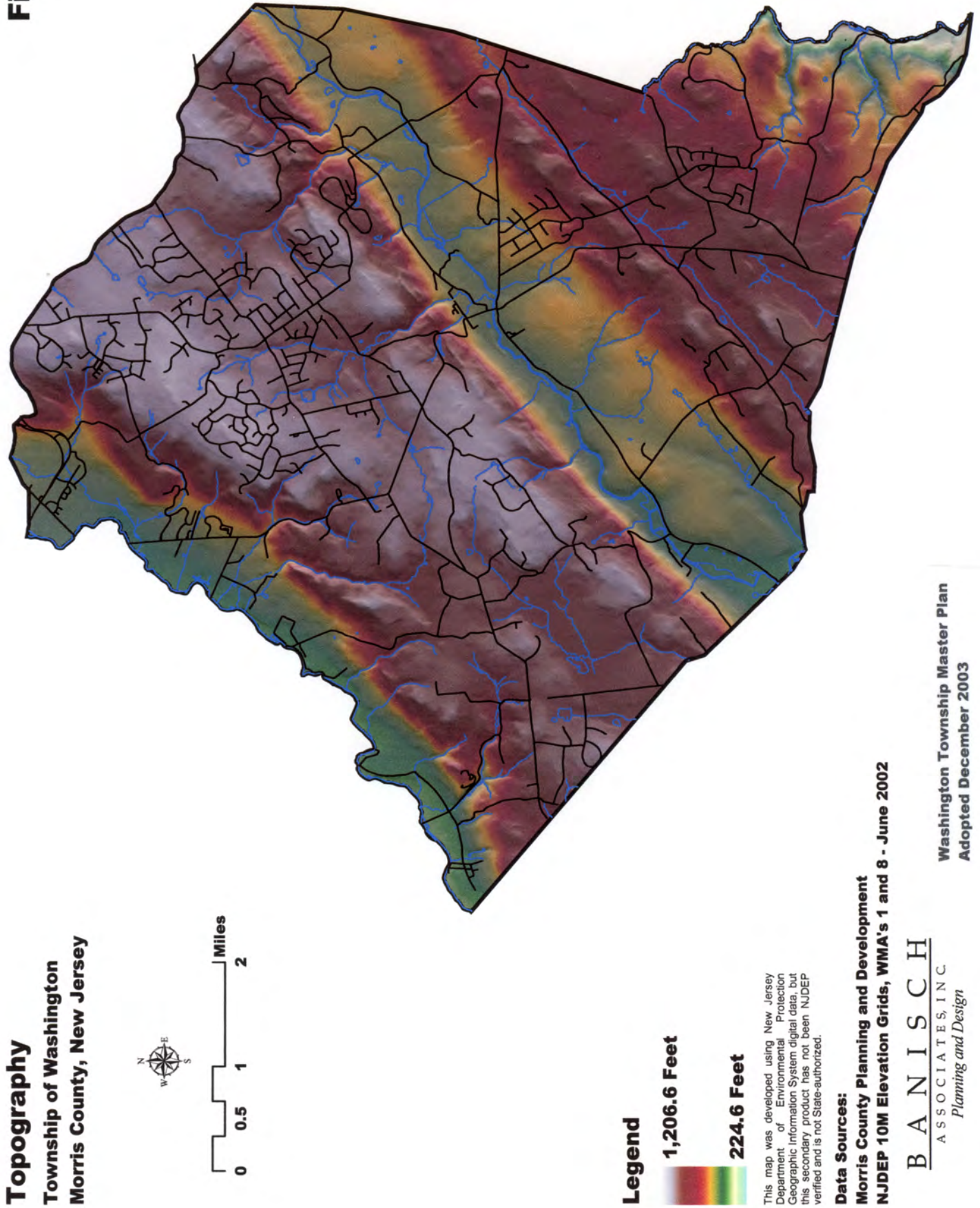
Legend

- 100 Foot Contour
- Slopes less than 15%
- Slopes greater than 15% and less than 25%
- Slopes greater than 25%

This map was developed using New Jersey Department of Environmental Protection Geographic Information System digital data, but this secondary product has not been NJDEP verified and is not State-authorized.

Data Sources:
 Morris County Planning and Development
 NJDEP 10M Elevation Grids, WMA's 1 and 8 - June 2002

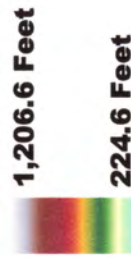
Figure 16



Topography
Township of Washington
Morris County, New Jersey



Legend



This map was developed using New Jersey Department of Environmental Protection Geographic Information System digital data, but this secondary product has not been NJDEP verified and is not State-authorized.

Data Sources:
Morris County Planning and Development
NJDEP 10M Elevation Grids, WMA's 1 and 8 - June 2002

BANISCH
ASSOCIATES, INC.
Planning and Design

Washington Township Master Plan
Adopted December 2003

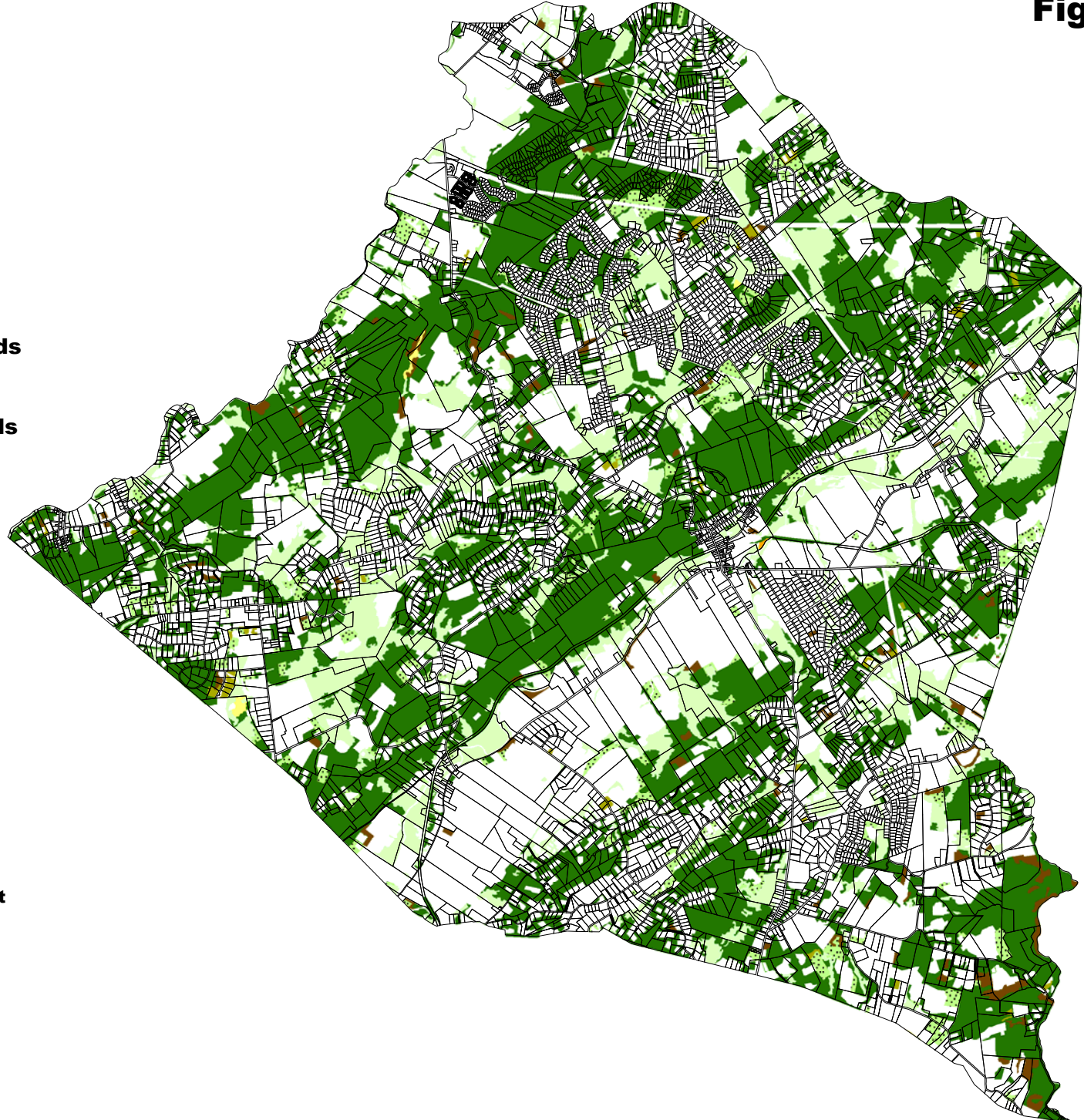
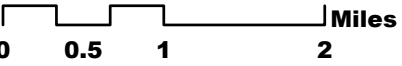
Figure 17

Forested Areas - 1995

**Township of Washington
Morris County, New Jersey**

Legend

-  **Brush Covered Field**
-  **Coniferous Forest**
-  **Coniferous Wooded Wetlands**
-  **Deciduous Forest**
-  **Deciduous Wooded Wetlands**
-  **Mixed Forest**
-  **Mixed Wooded Wetlands**
-  **Plantation**



**Washington Township Master Plan
Adopted December 2003**

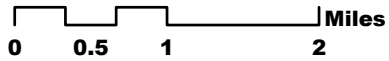
**Data Sources:
Morris County Planning and Development
NJDEP - 1995 Land Use/Land Cover**

This map was developed using New Jersey Department of Environmental Protection Geographic Information System digital data, but this secondary product has not been NJDEP verified and is not State-authorized.

Agricultural Lands - 1995

Township of Washington
Morris County, New Jersey

Figure 18



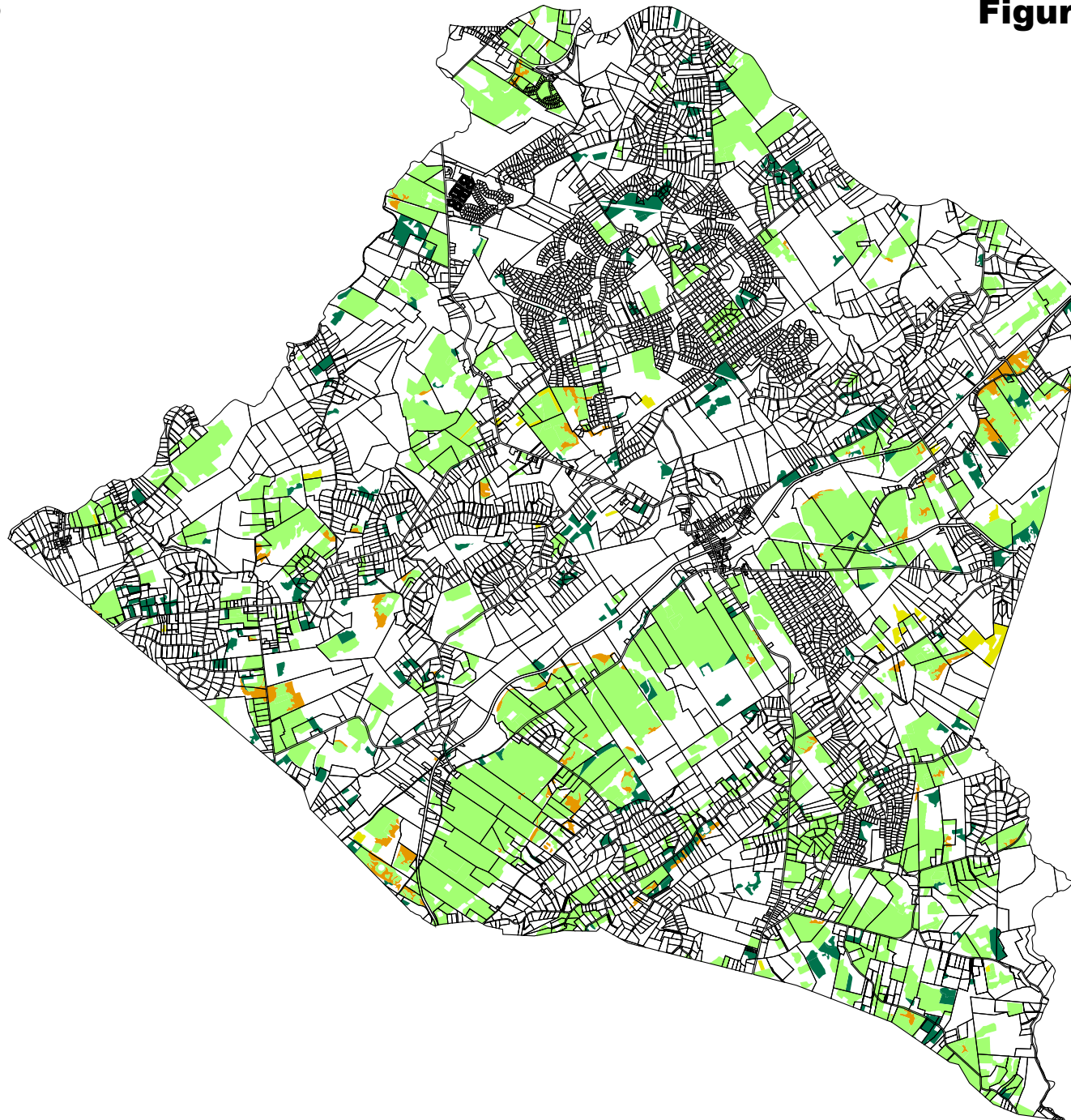
Legend

-  Agricultural
-  Plantation
-  Brush Covered Field
-  Agricultural Wetlands

Washington Township Master Plan
Adopted December 2003

Data Sources:
Morris County Planning and Development
NJDEP - 1995 Land Use/Land Cover

This map was developed using New Jersey Department of Environmental Protection Geographic Information System digital data, but this secondary product has not been NJDEP verified and is not State-authorized.



Critical Forest and Grassland Habitat

Township of Washington

Morris County, New Jersey

Figure 19

Disclaimer:

- These maps provide information regarding the location of areas identified to date by the New Jersey Department of Environmental Protection (DEP) as habitat for endangered or threatened wildlife species.
- DEP may identify additional endangered or threatened species habitat at any time if there is sufficient evidence that an area qualifies as threatened or endangered species habitat.
- DEP may determine that an area shown on the maps as threatened or endangered wildlife habitat is not suitable for use as habitat. In that case, the area will no longer be classified as endangered or threatened species habitat.
- The maps will be updated periodically to reflect additional areas identified as threatened or endangered wildlife habitat, and to remove areas determined to be no longer suitable habitat for endangered or threatened wildlife.
- These maps show only areas identified as suitable habitat for threatened or endangered animal species, not threatened or endangered plant species. The DEP's method for identifying threatened or endangered plant species habitat can be found in the Department's Freshwater Wetlands Technical Manual, available from the Department's Office of Maps and Publications at (609) 777-1038.
- Any wetlands boundaries shown on these maps are approximate and are for guidance only. Therefore, these maps are not an accurate indication of whether DEP will classify an area as exceptional resource value wetland under the DEP's freshwater wetlands rules. To obtain a determination of whether or where wetlands are located on a property and the resource value classification of a wetland, contact the DEP and apply for a letter of interpretation under the freshwater wetlands rules, N.J.A.C. 7:7A-3.

Legend

Grassland Habitat

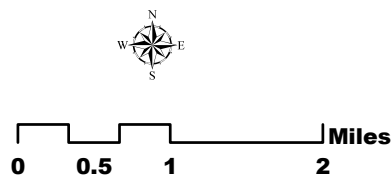
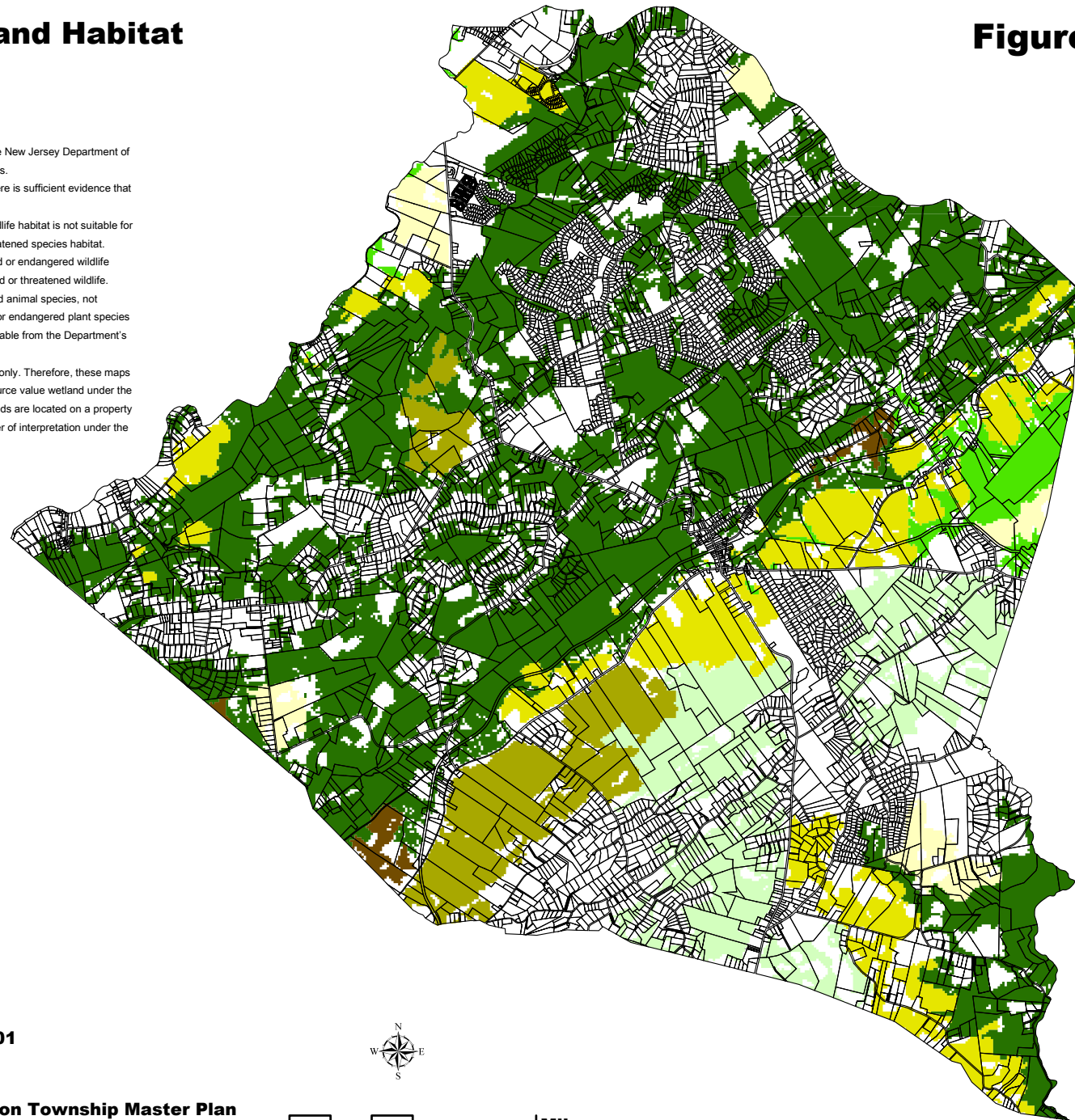
-  Rank 1 Grassland Habitat
-  Rank 3 Grassland Habitat
-  Rank 4 Grassland Habitat
-  Rank 5 Grassland Habitat

Forest Habitat

-  Rank 1 Forest Habitat
-  Rank 3 Forest Habitat
-  Rank 4 Forest Habitat

This map was developed using New Jersey Department of Environmental Protection Geographic Information System digital data, but this secondary product has not been NJDEP verified and is not State-authorized.

Data Sources:
Morris County Planning and Development
NJDEP ENSP Landscape Project - October 2001



Critical Emergent and Forested Wetland Habitat Township of Washington Morris County, New Jersey

- Disclaimer:
- These maps provide information regarding the location of areas identified to date by the New Jersey Department of Environmental Protection (DEP) as habitat for endangered or threatened wildlife species.
 - DEP may identify additional endangered or threatened species habitat at any time if there is sufficient evidence that an area qualifies as threatened or endangered species habitat.
 - DEP may determine that an area shown on the maps as threatened or endangered wildlife habitat is not suitable for use as habitat. In that case, the area will no longer be classified as endangered or threatened species habitat.
 - The maps will be updated periodically to reflect additional areas identified as threatened or endangered wildlife habitat, and to remove areas determined to be no longer suitable habitat for endangered or threatened wildlife.
 - These maps show only areas identified as suitable habitat for threatened or endangered animal species, not threatened or endangered plant species. The DEP's method for identifying threatened or endangered plant species habitat can be found in the Department's Freshwater Wetlands Technical Manual, available from the Department's Office of Maps and Publications at (609) 777-1038.
 - Any wetlands boundaries shown on these maps are approximate and are for guidance only. Therefore, these maps are not an accurate indication of whether DEP will classify an area as exceptional resource value wetland under the DEP's freshwater wetlands rules. To obtain a determination of whether or where wetlands are located on a property and the resource value classification of a wetland, contact the DEP and apply for a letter of interpretation under the freshwater wetlands rules, N.J.A.C. 7:27A-3.

Legend

Forested Wetland Habitat

- Rank 1 Habitat
- Rank 3 Habitat
- Rank 5 Habitat

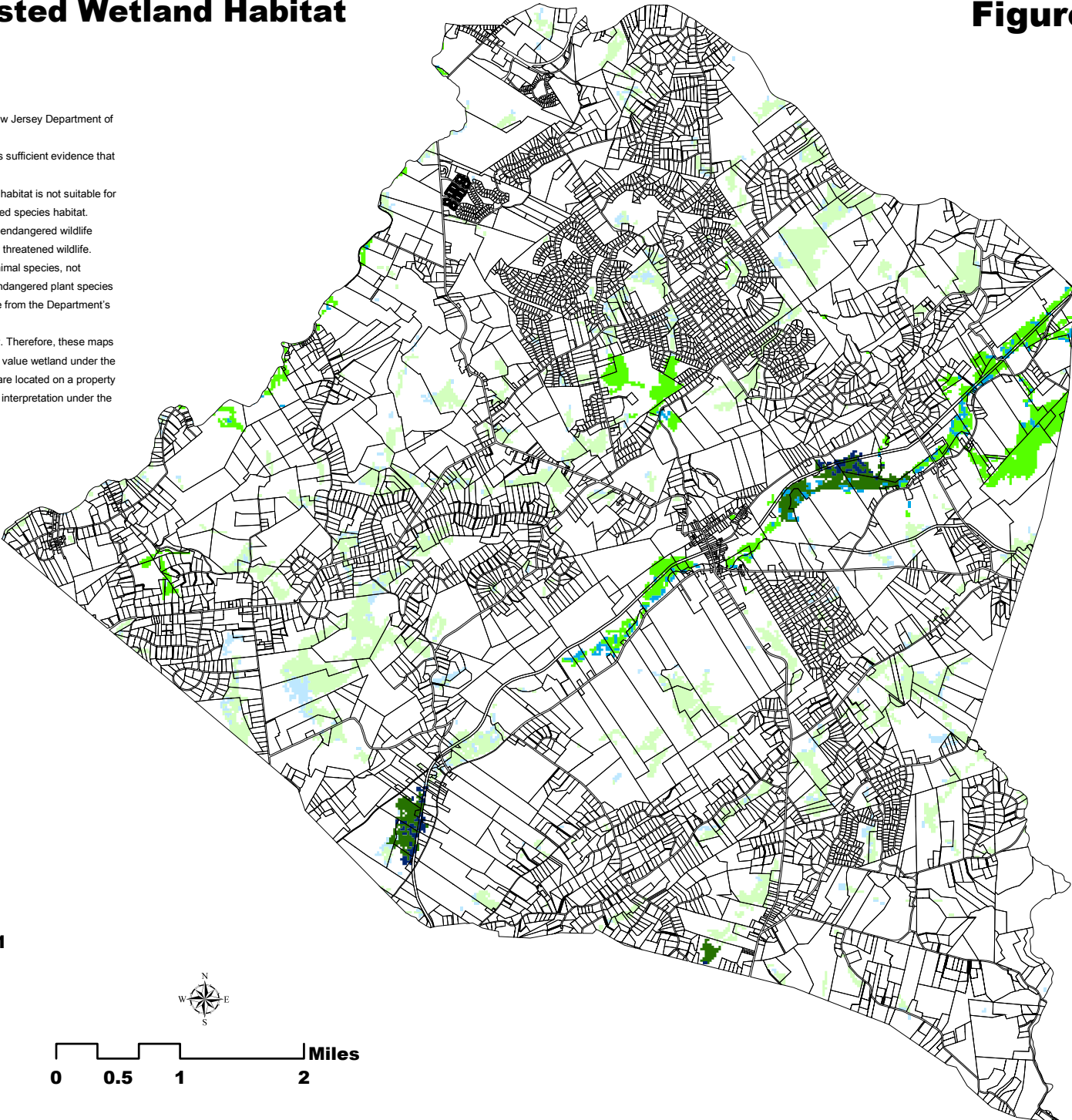
Emergent Habitat

- Rank 1 Habitat
- Rank 3 Habitat
- Rank 5 Habitat

Washington Township Master Plan
Adopted December 2003

Data Sources:
Morris County Planning and Development
NJDEP ENSP Landscapes Project - October 2001

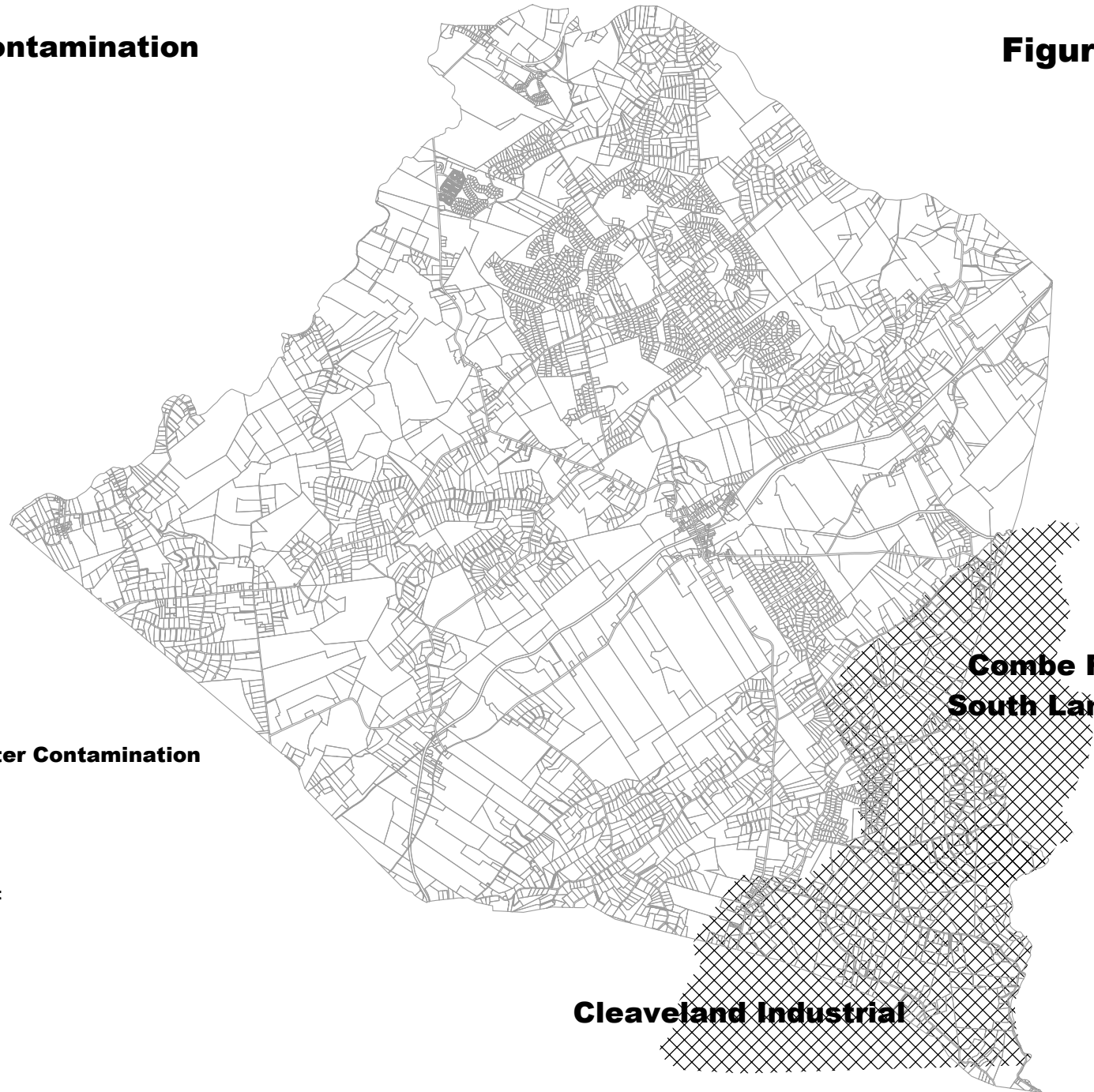
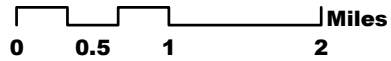
This map was developed using New Jersey Department of Environmental Protection Geographic Information System digital data, but this secondary product has not been NJDEP verified and is not State-authorized.



Known Groundwater Contamination

Township of Washington
Morris County, New Jersey

Figure 21



Legend

 **Extent of Known Groundwater Contamination**

**Washington Township Master Plan
Adopted December 2003**

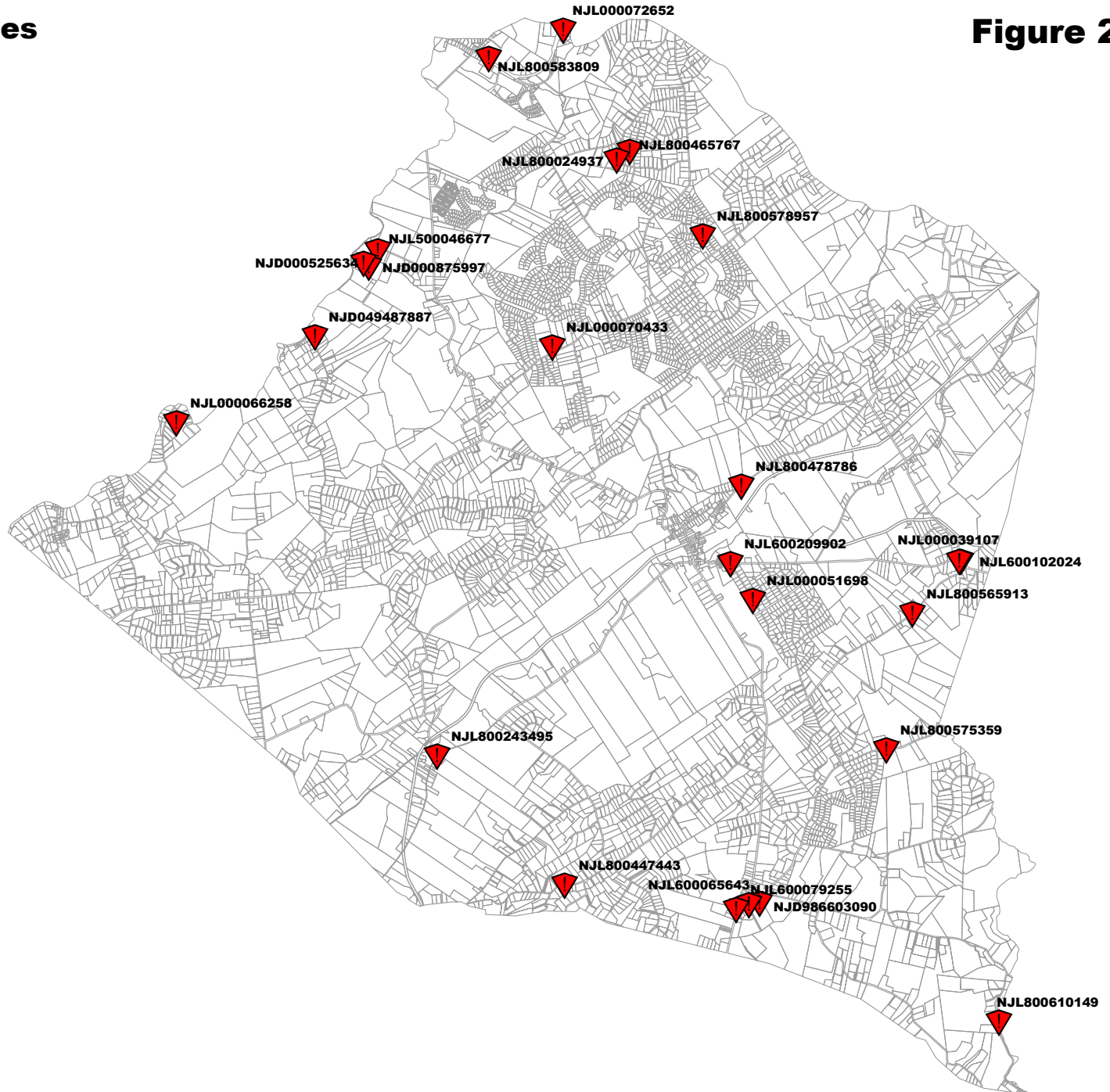
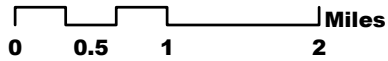
**Data Sources:
Morris County Planning and Development
NJDEP - December 2001**

This map was developed using New Jersey Department of Environmental Protection Geographic Information System digital data, but this secondary product has not been NJDEP verified and is not State-authorized.

Known Contaminated Sites

Township of Washington
Morris County, New Jersey

Figure 22



Legend

 **Known Contaminated Sites**

Washington Township Master Plan
Adopted December 2003

Data Sources:
Morris County Planning and Development
NJDEP - May 2002

This map was developed using New Jersey Department of Environmental Protection Geographic Information System digital data, but this secondary product has not been NJDEP verified and is not State-authorized.